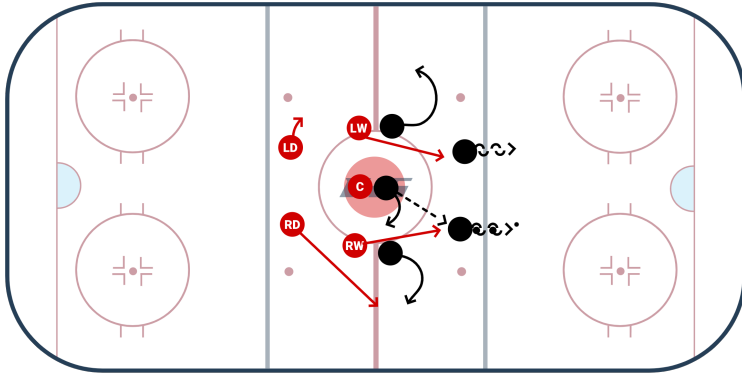


Neutral Zone Face-Off Loss



Notes / Coaching Points

Description



Above is a Neutral Zone Face-Off play that can be used in any face-off circle in the neutral zone if your team loses the draw. [Topher Scott](#) breaks down the play, which is a man-on-man attack that aims to create turnovers by taking away time and space. If your team is unable to turn over the puck it is important to get back quickly and come back through the center of the ice with your sticks on the ice to take away passing options.