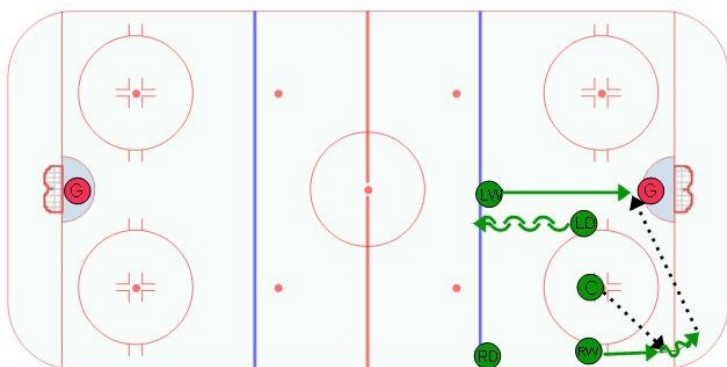


Half Shock Read



Notes / Coaching Points



Description

The formation for this face off play is the same as the regular 1/2 shock with the Left Wing and Left Defense switching places. If the opponents don't cover the board side wing, or if you have a mis-match along the boards, the center can try to get the puck into the corner. RW needs to get to the puck and just get the puck to the front of the net where LW is crashing hard.