



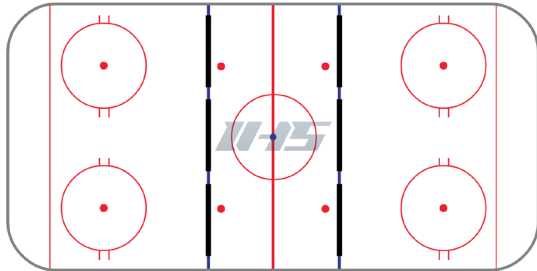
# Mite / Novice (U8) 3 Station Practice Plan #1

PRACTICE PLAN

Age Level: Mite / Novice (U8)

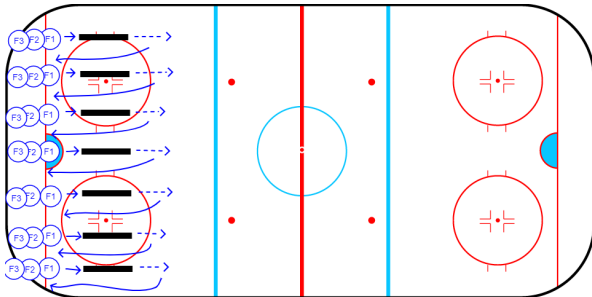
Format: 3 Stations

## OVERVIEW



Warm Up Activity - Superman Relays (full ice)- 10 minutes  
Station #1 - 2 vs 2 vs 2 with mini nets - 15 minutes  
Station #2 - Finders Keepers - 15 minutes  
Station #3 - 3 vs 3 Cross Ice - 15 minutes

## WARM UP - SUPERMAN RELAYS (FULL ICE)

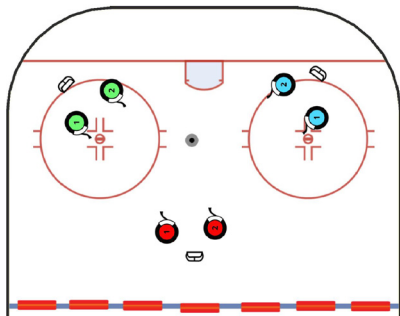


### HOW THE RACE IS RUN

Divide the players into teams along the goal line so you have 3 - 4 players per team. Each team will have a barrier in front of them. The first player will skate and do a superman dive onto the barrier and slide as far as they can. When they come to a stop they get back on their feet and skate back to line. Once they cross the goal line the next player in line can go. This repeats until they get the barrier across the goal line at the other end. The first team to do so wins.

My Notes

## STATION #1 - 2 VS 2 VS 2 WITH MINI NETS



This game gives players an great opportunity to be creative and play a small area game with a twist. The game requires awareness as they are trying to score on two nets and trying to protect one net.

### SETUP

Place three mini nets in a triangle formation in one offensive / defensive zone as shown in the diagram. Divide players into three teams. Two players from each team will be involved at one time. Players will play for 60 - 90 seconds.

### How the game is played

Each team has a net that they protect. They are trying to score on the other two nets. If they score a goal on one of the other nets they earn 1 point. If they allow a goal on the net they are trying to protect then they lose 1 point.

My Notes



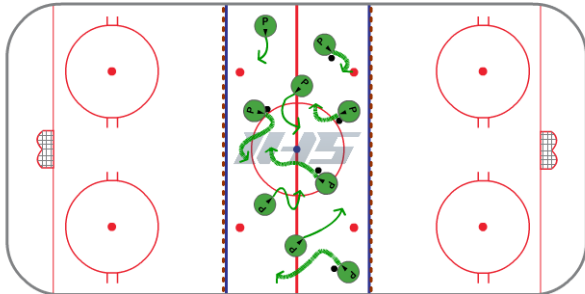
# Mite / Novice (U8) 3 Station Practice Plan #1

PRACTICE PLAN

Age Level: Mite / Novice (U8)

Format: 3 Stations

## STATION #2 - FINDERS KEEPERS - PUCK PROTECTION DRILL



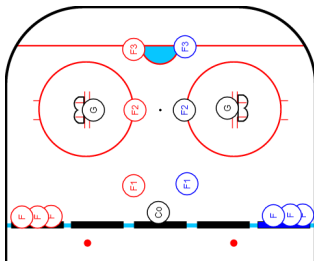
### How to Play

Depending on the size of your team you can use the neutral zone of one end from the blue line to the end boards. You will need half as many pucks as you have players. For example if we have 12 players then we will use 6 pucks. On the whistle the coach will shoot the pucks into the zone. The objective for the players is to find a puck and maintain puck possession. The coach will allow the players to go for 45 seconds to 1 minute. On the whistle the players must stop where they are. The coach can decide a consequence for the players that do not have a puck such as push-ups or skating.

Players that have the most success will be playing with their head up and protecting the puck towards open ice. They will also use awareness to look for opportunities to steal pucks from other players.

My Notes

## STATION #3 - 3 VS 3 CROSS-ICE



This is a basic cross ice 3 vs 3. Depending on your numbers and the age level you can do 4 vs 4 as well. Keep in mind one of the goals is to get every player engaged and a lot of puck touches.

### SET UP

Place two nets cross ice facing each other with three players from each team in the playing area. In this set up the goals are moved up to the face-off dots. This allows more space behind the nets and allows for more plays and shots on net. Allow the players to play for 60 - 90 seconds then blow the whistle for a shift change.

My Notes